

1. [+ Whole Numbers to 10]

	4	6	11	8	7	13	10	2	9	15
+ 3										

2. [- Whole Numbers to 10]

	15	17	8	6	13	9	11	12	10	14
- 4										

3. [× Whole Numbers to 12]

	4	5	10	8	7	11	3	6	9	12
× 2										

4. [÷ Whole Numbers to 12]

	5	10	40	45	30	35	20	15	50	25
÷ 5										

Term 2  
Week 2

5. [Large Number +, -] \*

$$2453 - 249 =$$

12. [Decimals / Fractions / Percents]

Simplify  $\frac{6}{8}$

18. [Multiples / Factors / Primes] \*

List the common multiples of 4 and 5 up to 60.

6. [Large Number ×, ÷] \*

$$3070 \div 10 =$$

13. [Integers]

Arrange in ascending order:

5, -2, 3, -6, 7

7. [Decimal +, -] \*

$$3.57 + 4.81 =$$

19. [Number Patterns]

Complete the pattern:

2, 10, 18, 26,

8. [Decimal ×, ÷] \*

$$0.4 \times 3 =$$

14. [Rates / Ratios]

Simplify the ratio

18 : 30

9. [Fraction +, -]

$$\frac{5}{7} + \frac{1}{7} =$$

15. [Indices / Square Roots]

$$6^2 =$$

20. [Expressions]

Simplify  $t + t + t$

10. [Fraction ×, ÷] \*

$$5 \times \frac{3}{7} =$$

16. [Order of Operations] \*

$$3 + 7 \times 3 =$$

21. [Substitution] \*

If  $f = 4$ ,  
find the value of  $f + f - 2$

11. [Percentages] \*

In Australia 32% of women will never marry. What percentage of women will marry?

17. [Exploring Number]

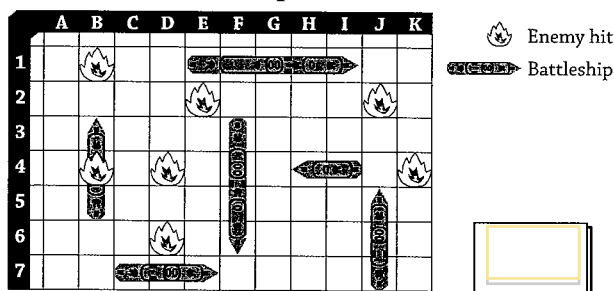
What is value of the underlined digit in the number 964?

22. [Equations]

$$\square + 7 = 13$$

**23.** [Coordinates]

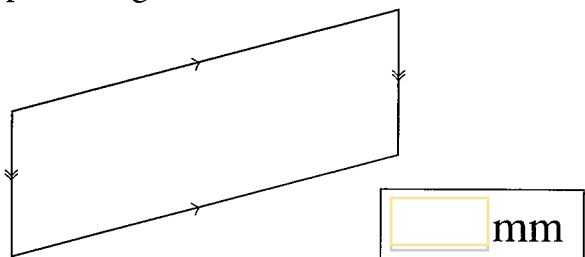
What is the grid reference of the enemy hit on the battleship?

**24.** [Units of Measurement / Time] \*

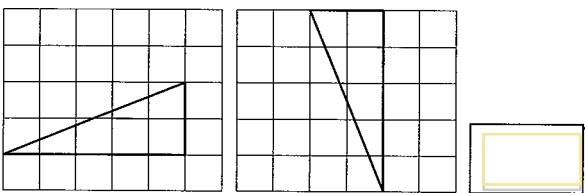
16 m =  mm

**25.** [Perimeter] \*

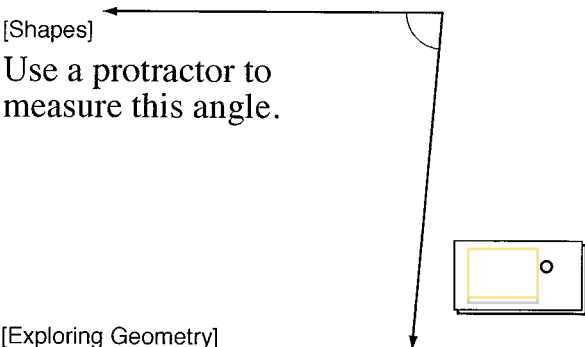
Use a ruler to find the perimeter of the parallelogram in millimetres.

**26.** [Area / Volume]

Do these triangles have the same area?

**27.** [Shapes]

Use a protractor to measure this angle.

**28.** [Exploring Geometry]

Draw all the axes of symmetry of this shape. How many axes of symmetry does this shape have?

**29.** [Statistics]

Which world region has the highest penetration of the internet?

World Internet Usage 2010		
World Regions	% popn. penetration	% of world usage
Africa	6.8	3.9
Asia	19.4	42.6
Europe	52.0	24.1
Middle East	28.3	3.3
North America	74.2	14.6
Latin America/Caribbean	30.5	10.3
Oceania/Australia	60.4	1.2
WORLD TOTAL	25.6	100

**30.** [Probability]

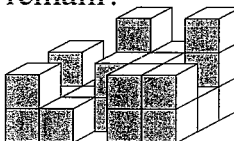
Ita can choose an economy, business or first class flight to London, Paris or Rome. How many different outcomes are possible? [Complete the table.]

Outcomes (sample space)	
economy	London
economy	Paris
economy	Rome
business	London
business	Paris
business	Rome
first	London
first	Paris
first	Rome

9

**31.** [Problem Solving 1] \*

Some cubes have been removed from an array of  $5 \times 3 \times 3$ . How many cubes remain?

**32.** [Problem Solving 2]

A man looking at a photograph says, "Brothers and sisters I have none, but that man's father is my father's son." Who is in the photograph?

**33.** [Problem Solving 3] \*

Three girls, Angela, Lakisha and Jessica, each have one boyfriend and one pet. Lakisha has a bulldog. The horse belongs to the girl whose boyfriend is Paul. If Angela's boyfriend is Ken and the other boyfriend is Stephen, who is Jessica's boyfriend?